



Beaufort County Public Works Stormwater Infrastructure Project Summary

Project Summary: Bluffton Valley Drains

Activity: Routine/Preventive Maintenance

Narrative Description of Project:

Completion: Aug-14

Project improved 16,008 L.F. of drainage system. Cleaned 16,008 L.F. of valley drains. This project consisted of the following areas:

Buck Point Road (3,250 L.F.), Ballfield Road (2,730 L.F.), Lake View Court (7,000 L.F.) and Mammy Grant Road (3,028 L.F.)

2015-315 / Bluffton Valley Drains	Labor Hours	Labor Cost	Equipment Cost	Material Cost	Contractor Cost	Indirect Labor	Total Cost
AUDIT / Audit Project	0.5	\$10.23	\$0.00	\$0.00	\$0.00	\$6.62	\$16.85
COVD / Cleaned Out Valley Drains	40.0	\$841.81	\$160.40	\$150.19	\$0.00	\$553.00	\$1,705.40
HAUL / Hauling	17.0	\$367.71	\$181.90	\$108.24	\$0.00	\$211.99	\$869.84
ONJV / Onsite Job Visit	2.0	\$66.36	\$7.24	\$9.09	\$0.00	\$48.94	\$131.63
2015-315 / Bluffton Valley Drains Sub Total	59.5	\$1,286.11	\$349.54	\$267.52	\$0.00	\$820.55	\$2,723.71
Grand Total	59.5	\$1,286.11	\$349.54	\$267.52	\$0.00	\$820.55	\$2,723.71

Before



During



After



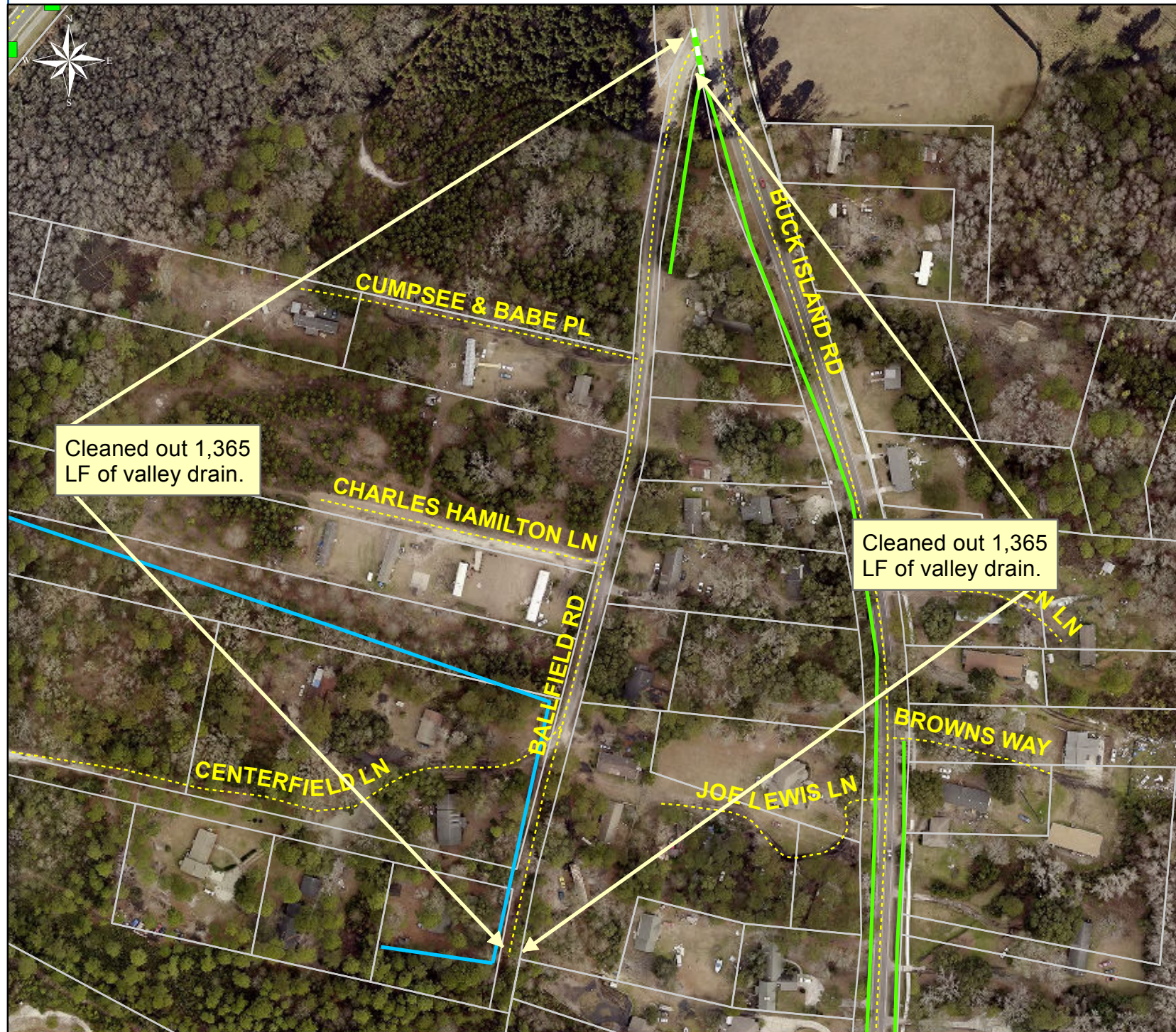
Project: Ballfield Road

**Activity: Routine/
Preventive
Maintenance**

**Project #:
2015-315**

**Township:
Bluffton**

**Completed:
August 2014**



Legend

TYPE

- River
- Creek/Stream
- River/Creek/Marsh BANK
- Channel (fka Outfall)
- Channel Pipe
- Lateral
- Lateral Pipe
- Roadside
- Roadside Pipe
- Road Pipe
- Crossline Pipe
- Driveway Pipe
- Access Pipe
- Bleeder Pipe

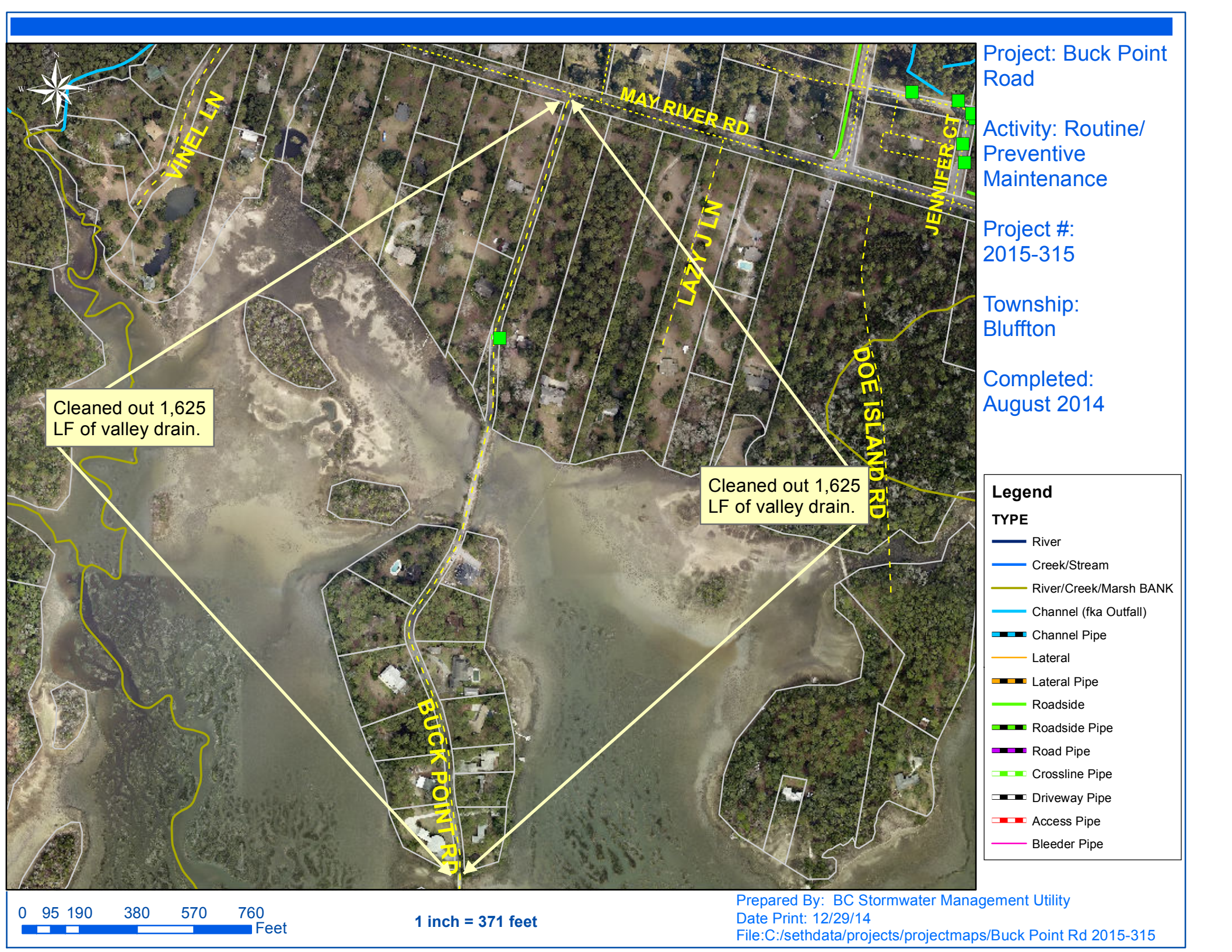
0 50 100 200 300 400
Feet

1 inch = 202 feet

Prepared By: BC Stormwater Management Utility

Date Print: 12/29/14

File: C:/sethdata/projects/projectmaps/Ballfield Rd 2015-315



Project: Lake View Court

**Activity: Routine/
Preventive
Maintenance**

**Project #:
2015-315**

**Township:
Bluffton**

**Completed:
August 2014**



Legend

TYPE

- River
- Creek/Stream
- River/Creek/Marsh BANK
- Channel (fka Outfall)
- Channel Pipe
- Lateral
- Lateral Pipe
- Roadside
- Roadside Pipe
- Road Pipe
- Crossline Pipe
- Driveway Pipe
- Access Pipe
- Bleeder Pipe

0 65 130 260 390 520
Feet

1 inch = 250 feet

Prepared By: BC Stormwater Management Utility

Date Print: 12/29/14

File: C:/sethdata/projects/projectmaps/Lake View Ct 2015-315

Project: Mammy Grant Road

**Activity: Routine/
Preventive
Maintenance**

**Project #:
2015-315**

**Township:
Bluffton**

**Completed:
August 2014**



Legend

TYPE

- River
- Creek/Stream
- River/Creek/Marsh BANK
- Channel (fka Outfall)
- Channel Pipe
- Lateral
- Lateral Pipe
- Roadside
- Roadside Pipe
- Road Pipe
- Crossline Pipe
- Driveway Pipe
- Access Pipe
- Bleeder Pipe

0 40 80 160 240 320
Feet

1 inch = 167 feet

Prepared By: BC Stormwater Management Utility

Date Print: 12/30/14

File: C:/sethdata/projects/projectmaps/Mammy Grant Rd 2015-315